



FOR IMMEDIATE RELEASE

April 7, 2022

Contact: Kate Gibbs, kgibbs@wcwd.org, 510-390-4844

WCW Board Votes Unanimously on Redistricting 2022

At the April 6, 2022, West County Wastewater (WCW) Board meeting, the Board of Directors voted to effectuate redistricting map Plan 6 by a unanimous vote. (see map below).

Every 10 years, district boundaries are evaluated and considered for redrawing or redistricting after each U.S. Census. Per elections code §22000 et seq., Special Districts like West County Wastewater reevaluate division boundaries and adjust boundary lines as necessary to ensure the divisions are approximately equal in population, with less than 10% deviation among electoral divisions.

In 2020, the U.S. Census data showed there was not more than 10% population deviation and WCW was not required to reevaluate electoral divisions. However, the WCW Board of Directors choose to adjust its division boundaries to improve them in terms of topography, geography, cohesiveness, contiguity, integrity, compactness of territory and to honor communities of interest.

On March 16, 2022, the Board considered three draft electoral division maps (plans 1, 2, and 3) and allowed for public comment after a presentation by WCW's demographer. The Board made no decisions but instead asked the demographer for another three maps to address the comments made by both the public and the Board of Directors. (Watch the video of the March 16, 2022, meeting [here](#))

On March 30, 2022, at a Special Board of Director's meeting, the Board was presented with three additional draft maps, (plans 4, 5, and 6) deliberated and listened to public comment. The Board narrowed the field to 2 draft maps (plans 2 and 6). Upon a 3-2 vote, the Board indicated its preference to draft map Plan 6.

Under elections Code §22001, the WCW Board must have an additional meeting because there were additional draft maps considered at the March 30 meeting. Therefore, at last evening's Board of Director's meeting, the Board was able to select from any of the six maps presented at the previous two meetings.

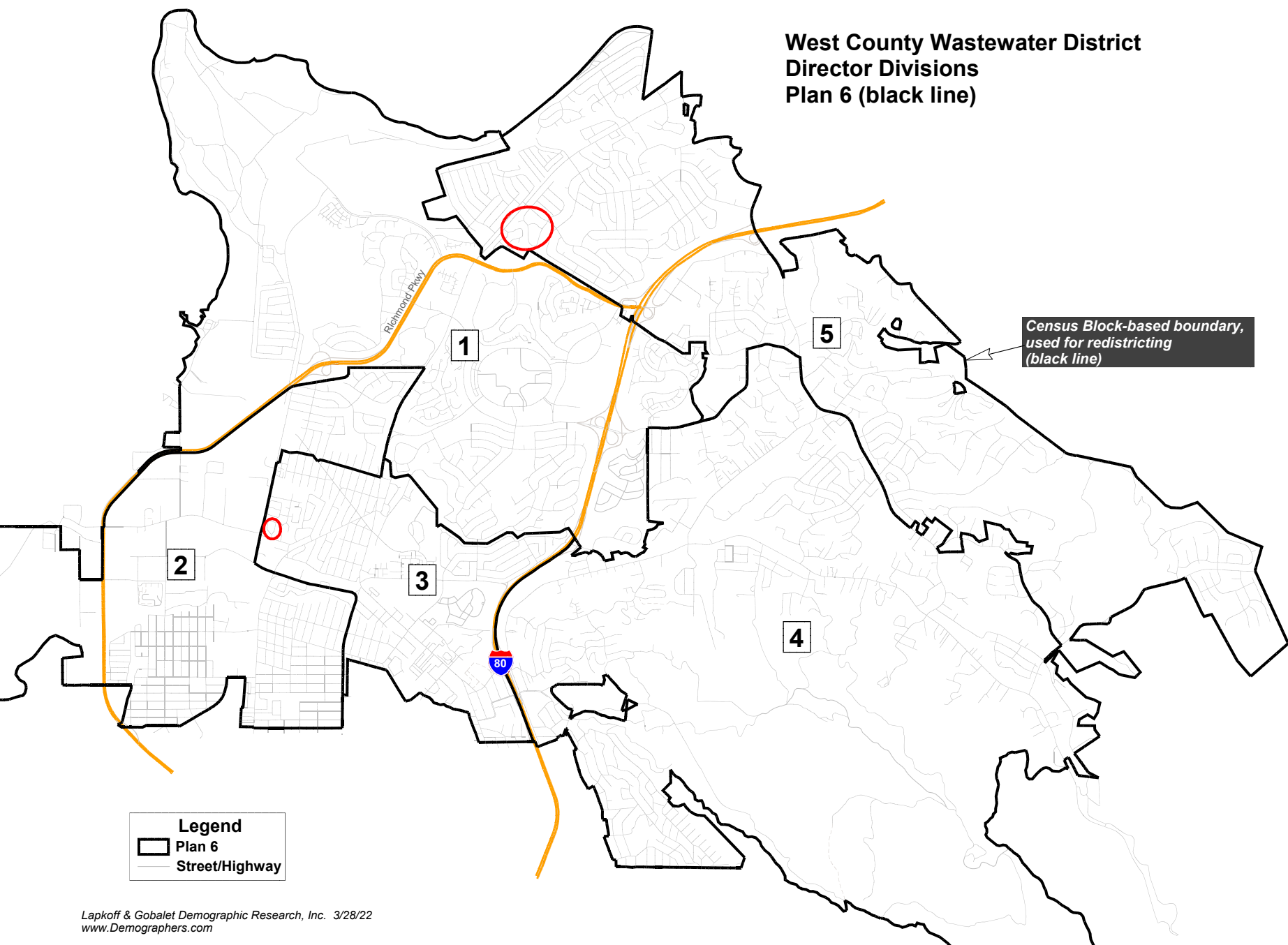
The demographer will provide the Contra Costa County Registrar with the new WCW election divisions to incorporate into election maps by April 17, 2022. Beginning in November 2022, the WCW community living in divisions 1, 3, and 5 will have an opportunity to vote for a Board member to represent their division.

WCW encourages those who are eligible to vote in the November 2022 elections.

###

West County Wastewater (WCW) was founded in 1921 to protect and serve the public health of the community through the construction and maintenance of a sewer system. Today, WCW provides sewage collection, treatment and disposal services to approximately 34,000 residences and 2,450 commercial and industrial businesses. WCW serves a total population of about 100,000 residents across 16.9 square miles. Governed by a five-member Board of Directors, WCW embraces practices that promote energy efficiency and environmental stewardship.

**West County Wastewater District
Director Divisions
Plan 6 (black line)**

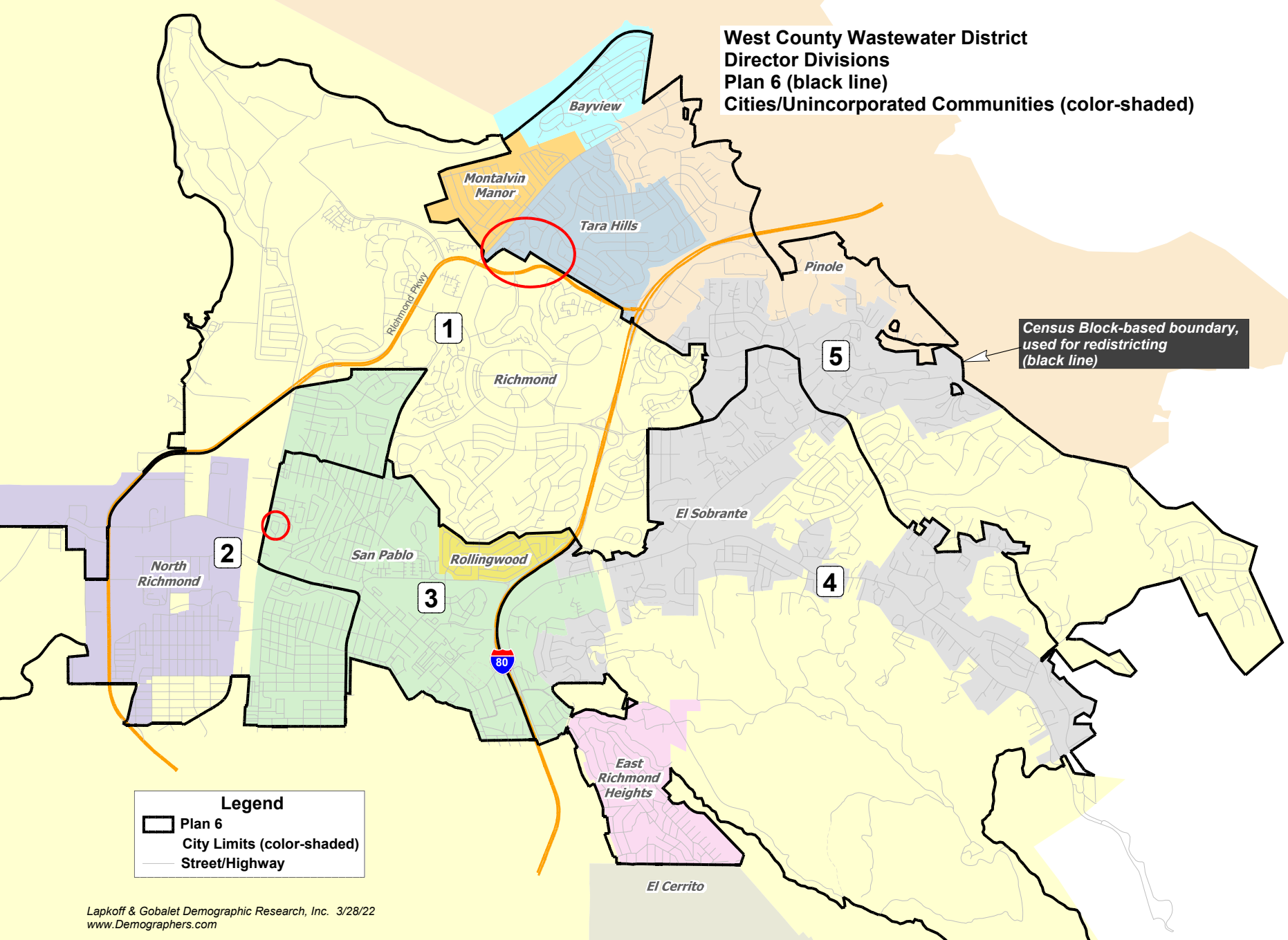


Legend

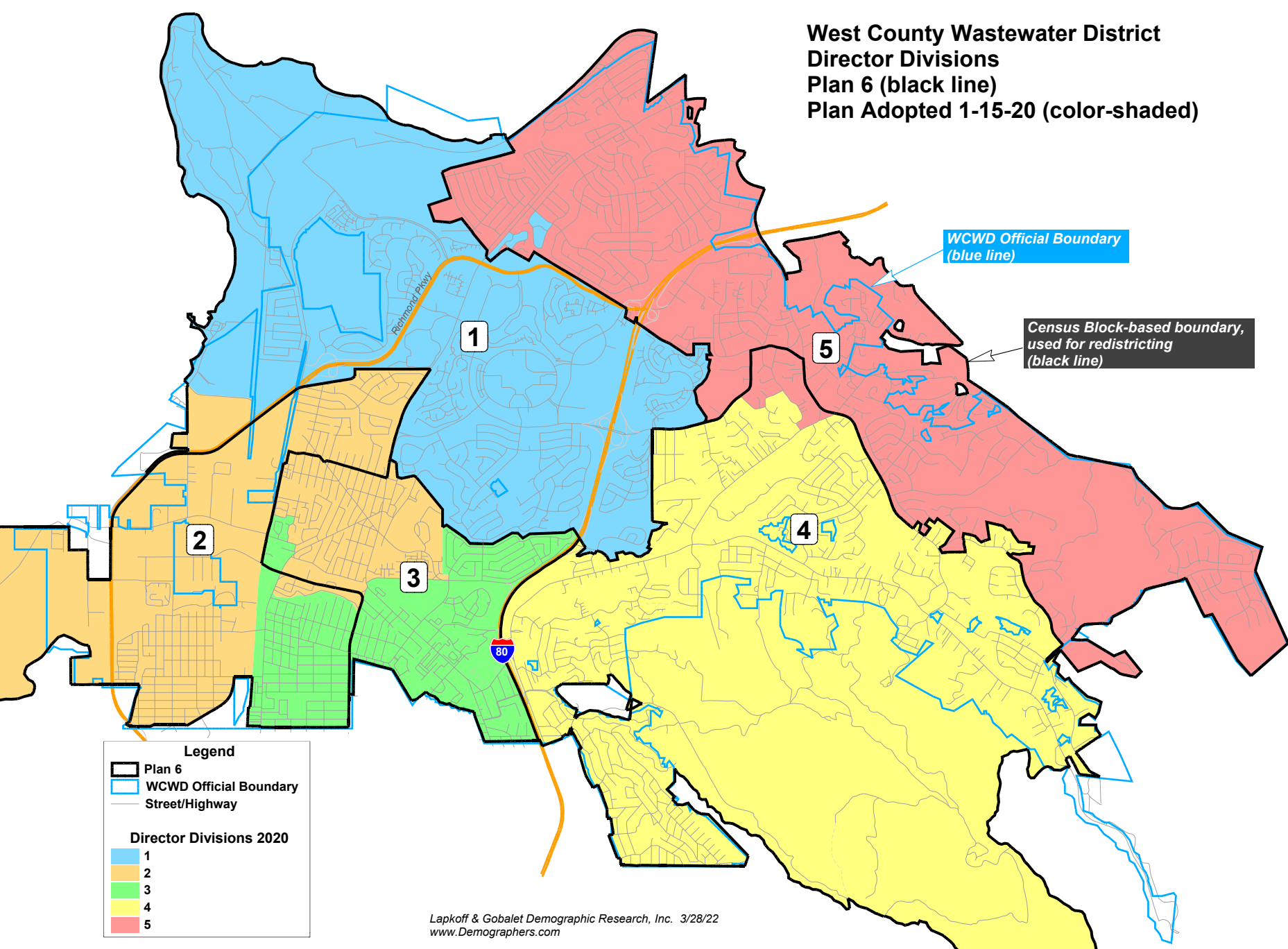
Plan 6

Street/Highway

West County Wastewater District
Director Divisions
Plan 6 (black line)
Cities/Unincorporated Communities (color-shaded)



**West County Wastewater District
Director Divisions
Plan 6 (black line)
Plan Adopted 1-15-20 (color-shaded)**



WCWD Plan 6

District	Total Population	Latino/ Hispanic	Non-Hispanic				Total
			White	Black	Asian	Other	
		Total Population Percentages					
1	20,226	30%	10%	29%	24%	6%	100%
2	19,918	72%	5%	11%	10%	3%	100%
3	20,114	56%	8%	14%	19%	4%	100%
4	21,623	26%	33%	14%	21%	6%	100%
5	21,201	35%	25%	11%	24%	4%	100%
Total	103,082	43%	17%	16%	20%	5%	100%
		Age 18+ (Voting Age) Population Percentages					
1	16,237	27%	11%	31%	25%	6%	100%
2	14,492	68%	6%	12%	11%	2%	100%
3	15,426	52%	9%	14%	21%	4%	100%
4	17,628	24%	36%	14%	21%	6%	100%
5	17,121	32%	28%	11%	25%	4%	100%
Total	80,904	40%	19%	16%	21%	5%	100%
		Citizens of Voting Age (CVAP) Percentages					
1	13,502	21%	17%	32%	23%	6%	100%
2	8,524	50%	9%	19%	14%	8%	100%
3	10,782	41%	13%	19%	20%	7%	100%
4	15,870	20%	40%	17%	17%	6%	100%
5	15,063	28%	35%	12%	21%	5%	100%
Total	63,741	30%	25%	20%	19%	6%	100%

WCWD Plan 6

District	Total Population	Latino/ Hispanic	Non-Hispanic			
			White	Black	Asian	Other
		Registered Voters				
1	9,998	20%			14%	
2	7,221	51%			7%	
3	8,393	39%			11%	
4	13,302	17%			11%	
5	13,236	25%			13%	
Total	52,150	28%			12%	
		Actual Voters				
1	7,638	19%			14%	
2	4,985	52%			8%	
3	5,999	39%			12%	
4	11,076	17%			10%	
5	10,716	25%			13%	
Total	40,414	27%			12%	
District	Total Pop	Deviation	% Deviation			
1	20,226	-390	-1.9%			
2	19,918	-698	-3.4%			
3	20,114	-502	-2.4%			
4	21,623	1,007	4.9%			
5	21,201	585	2.8%			
Total	103,082					
Ideal	20,616	1,705	8.3%			